

The image shows a modern urban streetscape. In the foreground, there are several tall palm trees with textured trunks and green fronds. To the right, a series of dark, vertical, rectangular metal structures are arranged in a row, creating a sense of depth. A person is walking in the background, and a building is visible in the distance under a clear blue sky. The overall scene is bright and sunny.

# Urban Streetscape Design

DESIGN MEDIA PUBLISHING LIMITED

# Rearrangement of the Town Centre, Mondercange



Completion date:  
2011  
Location:  
Luxembourg  
Architects:  
WW+, Wich Architekten  
Photographer:  
Linda Blatzek Photography  
(Trier, Germany)  
Area:  
94,000 sqm  
Client:  
Community of Mondercange

## Project description:

The basic framework of the urban concept for the arrangement of the town centre of Mondercange consists of a sequence of places, which reaches from the new place at the youth centre further to the small place near the church, then to the town hall square and finally to the school forecourt. The "Rue de l'Église" with the small park north to it – "Park Central", being an essential component of this band, was rearranged in a first phase and officially inaugurated in June 2011.

The concept for the new road "Rue de l'Église" envisages a strong reduction of the transit traffic as well as a traffic calming of the road into a meeting zone. According to this it's today only drivable in one direction for residents and the bus traffic coming from the main road as well as in two directions for cyclists. The former northern bypass of the church was rearranged into a footpath.

The northerly adjacent green areas between church and main road, previously showing an incoherent structure divided into small sections, are now connected in a functional and artistic manner, thus having a new assignment as a "central park" unity.

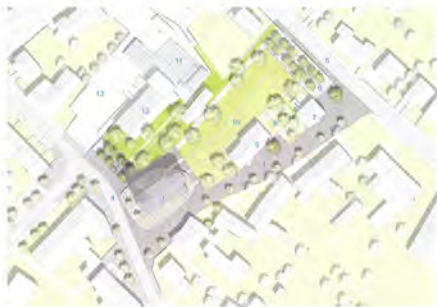
Despite the moved topography, the former barriers between youth centre, crèche, village square or church have been mostly removed; today the design of the small park is defined by generous public and play areas and new path connections. Wide spaces with a high-quality stay have been created with the aim of a high-value upgrade of the town centre. Furthermore, the church – as a significant building of the town – is today integrated in an adequate environment and is perceived better from the direction of the main road.

The beginning of the park from the main road



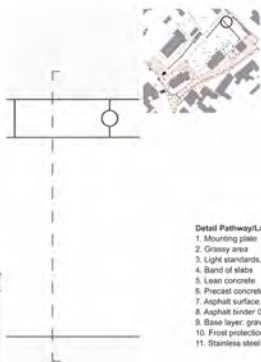
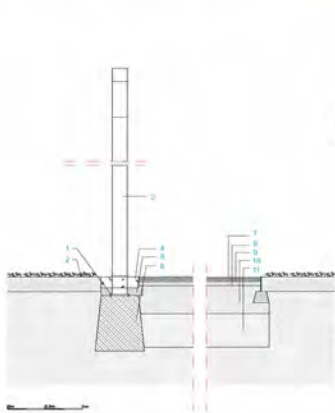
is the "Stadtpodest", which has been arranged as a green place, offering possibilities to pause or play a petange match under trees. A park way illuminated with light steles as a transitory band starts from here to the former "Place des Martyrs". The height differences in the park are accentuated by longitudinally arranged enclosure/seat walls, approx. 45cm high.

The playground is divided into an external area for the youth home with a small BBQ area and a separated playground for small children, which is assigned to the existing garderie and to the new garderie. This play area has been provided with natural materials (FSC-certified robinia wood for the playground, swings and edges) and thus is another attraction especially for the kids.



#### Plan drawing

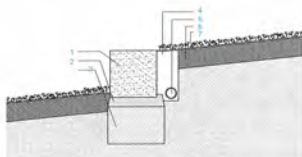
1. Street. Rue de l'Eglise
2. Place. Place des Martyrs
3. Church
4. Street. Rue d'esch
5. Street. Grand Rue
6. Place. "Town-Podest"
7. Youth hostel
8. Playground
9. Day-Care for children
10. Green space
11. Central square
12. Senior club
13. Parking area



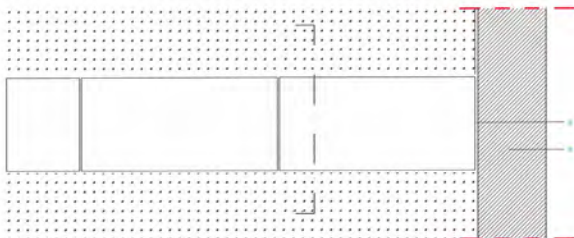
#### Detail Pathway/Lamp Pole

1. Mounting plate
2. Grassy area
3. Light standards, type Hess "REZIDENZA ZM"
4. Band of slabs
5. Lean concrete
6. Precast concrete base
7. Asphalt surface. d=3,5cm
8. Asphalt binder D/8. d=8,5cm
9. Base layer: gravel 0/50, min. 150 MN/m<sup>2</sup>
10. Frost protection layer 0/50, min. 120MN/m<sup>2</sup>
11. Stainless steel band 300x12mm





- 1-2 The seating area
- 3 The water feature
- 4 The pathway



#### Seat Blocks Detail

1. Seat blocks in natural stone 100x50x50cm, granite-grey, flamed surface
2. Lean concrete
3. Base layer: gravel Ø50, min. 180MN/m<sup>2</sup>
4. Drain Layer with filter fleece
5. Drain pipe DN 100
6. Topsoil
7. Turf
8. Bituminous layer and dimple sheet membrane between grass, seat blocks and existing masonry
9. Water repellent surface treatment to existent masonry

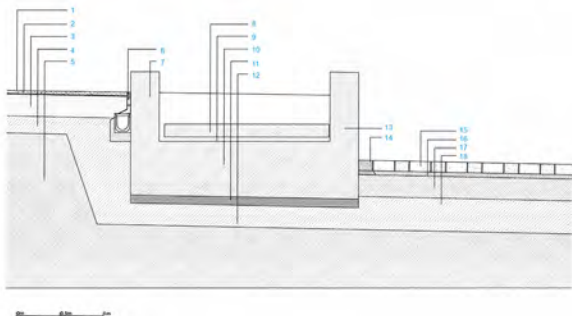








1.2. Generous public and play areas



**Square/Ramp/Street Detail**

**Square**

1. Top layer of mineral crushed stone 0/5mm
2. Surface treatment with crushed stone 0/8mm
3. Base layer of sand and gravel, 0/45mm
4. Ground: frost resistant and water permeable
5. Existing ground
6. Fair-faced concrete
7. Slot-gutter, Corten steel

**Ramp**

8. Natural stone tiles, granite, 230 x 70 / 105 x 15cm, sawn/flamed, side surfaces and bottom rough
9. Ballasts, cement-sand mortar 4/8, d=3.6cm
10. Foundation C 25/32
11. Subbase C 8/10, d=10cm
12. Foundation below freezing depth
13. Fair-faced concrete
14. Border, granite-grey, rugged, hammered and mottled surface, side surfaces and bottom rough

**Street**

15. Natural-stone pavement granite-gray, 16/24/32 x 16 x 12cm, sawn/flamed, side surfaces and bottom rough
16. Crushed stone/sharp sand 0/8, d=5cm
17. Base Layer: gravel 0/50 (Ev2 min. 150MN/m<sup>2</sup>)
18. Frost protection layer 0/50 (Ev2 min. 120MN/m<sup>2</sup>)



Nowadays, more and more people are moving to live in a city. They are anxious to improve the quality of life. A well-designed urban infrastructure with a vibrant street life makes people feel safe and relaxed during the day and night. Hence one can see that urban streetscape plays an important role in the development of urban life.

This book is distinguished by the typological and conceptual breadth of the projects it presents. The first four chapters present the overview of streetscape design, the types and characteristics, streetscape elements and sustainable streetscape design. Chapter five presents 33 fabulous projects all over the world, which showcase the great variety of designs expressing the contemporary perception of streetscapes whose concepts are innovative and trendsetting.

ISBN 978-988-12967-2-6



9 789881 296726 >